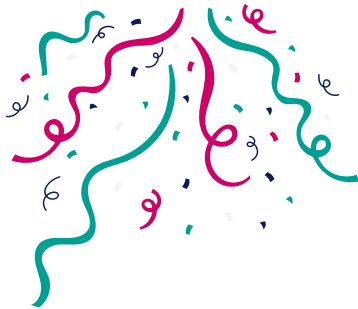


New Year's Party Logic Puzzle (Level 1)



		PARTY FOOD				DECORATIONS			
		Cupcakes	Pork pies	Sandwiches	Lemonade	Balloons	Fairy lights	Streamers	Tablecloth
NAME	Jamie								
	Aitana								
	Eilish								
	Piotr								
DECORATIONS	Balloons								
	Fairy lights								
	Streamers								
	Tablecloth								



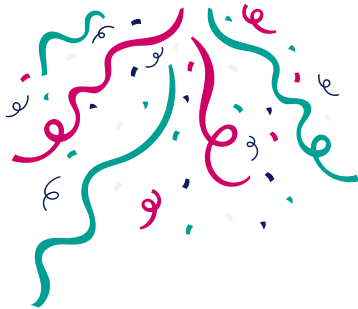
Four friends are planning a party for New Year's Eve. Each of them is bring one decoration and one item of party food. Can you work out who is bringing what?

- Piotr is not bringing the lemonade and Aitana is not bringing the cupcakes.
- Neither Aitana nor Piotr are bringing balloons.
- The person bringing the cupcakes is also bringing the tablecloth, but it's not Eilish.
- Eilish is bringing the streamers but not the lemonade.
- The person bringing the pork pies is also bringing the balloons.

SPOILER ALERT!

solution below

New Year's Party Logic Puzzle (Level 1)



		PARTY FOOD				DECORATIONS			
		Cupcakes	Pork pies	Sandwiches	Lemonade	Balloons	Fairy lights	Streamers	Tablecloth
NAME	Jamie	X	✓	X	X	✓	X	X	X
	Aitana	X	X	X	✓	X	✓	X	X
	Eilish	X	X	✓	X	X	X	✓	X
	Piotr	✓	X	X	X	X	X	X	✓
DECORATIONS	Balloons	X	✓	X	X				
	Fairy lights	X	X	X	✓				
	Streamers	X	X	✓	X				
	Tablecloth	✓	X	X	X				



Four friends are planning a party for New Year's Eve. Each of them is bring one decoration and one item of party food. Can you work out who is bringing what?

- Piotr is not bringing the lemonade and Aitana is not bringing the cupcakes.
- Neither Aitana nor Piotr are bringing balloons.
- The person bringing the cupcakes is also bringing the tablecloth, but it's not Eilish.
- Eilish is bringing the streamers but not the lemonade.
- The person bringing the pork pies is also bringing the balloons.